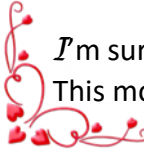

Scunthorpe & Grimsby Advanced Motorists

Group No 7080 Charity No. 10631 February 2022

Inside this month's edition....

Welcome to February!	2
From the Editor	
Ad Lad	
Welcome to our new members	
Chairman's Chatter	3
Observer News	
Important Info for ADI's	4
Calling all Driving Instructors	5
SAGAM Committee Members	6
Composition of Group & Contact Details	
Super Swift Gates	7
Did you Know?	8
Planet Haumea	
Dates for your Diary	9
DM Commercials	
Who was St. Valentine?	10
Rutland Sea Dragon	11
Laughter has got to be the Best Medicine	
Support Family and Friends	12
A little Bit of what you fancy	
Scrummy Yummy Offer	13
What am I?	
Advertising	
Caught My Eye – Valentine Car Features	14
Pets Corner – Foods NOT to Give Your Pet	15
Smart Motorways Paused	17
Innovative Concrete Repairs on M180	
Police Records & e-Scooter Crashes	19
IAM Info for members	20
Sneaky Highway Code Rule	21
February Word Search	
We Got Mail!	22
Upside down Tortoise?	
Recent Changes to the Highway Code	23
DVLA Services Blog	26
Important Message from Terry Heath	
Congratulations!	
And Finally.....	

Welcome to the February edition of the SAGAM Newsletter

 I'm sure that by now, you have got over the Christmas and new year festivities and like me are on a diet! This month's newsletter focusses somewhat on February 14th's Valentine's Day and whether you're 18 or 80, there will always be someone who means everything to you. If you are lucky enough to be able to spend time with your loved one, you will find articles relating to this special day such as an easy to make no-bake cake for your special someone as well as hints and tips for a romantic evening out in the car. If, for whatever reason you are apart on the 14th, enjoy some down time relaxing with a nice cuppa, let your mind wander and reminisce about the good times.

You will have noticed the hearts at the beginning of the editorial; this theme runs throughout February's newsletter and you'll find several articles headed by the same, which relate in one way or another to Valentine's Day.

There's an important article on page 4 particularly for the Approved Driving Instructors (ADI's) amongst us, but it's also a very interesting read for those of us who aren't. And an important date this year is for our **AGM on the 27th April**. In this edition too, we see the last instalment of Pets' Corner, with some great advice on what NOT to feed your dog. Apologies if this edition is a bit longer than normal – the recent Highway Code changes have taken up a good few pages! Please also take the time to read the important message from our Chairman on page 26.

I hope you find something to interest you and as always, I would appreciate any feedback be it positive or constructive....it all means a lot.



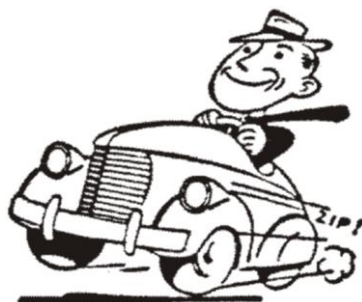
Did you find the Ad Lad? He was on page 19, and because no one found him in the December edition, he was hitching a lift on the bus, trying to leave! However, Carol Blades was the first to spot him in the January edition, quickly followed by Dawn Kitching! Martin Dale also emailed to say he had found him on the bus....Pssst.....I think our Ad Lad is in love.....




Welcome

TO OUR NEW MEMBERS:

DMITRY ILYUSHA & GLYN LAKE



Chairman's Chatter

*H*i good people, I hope your safe and well and now settling into the new year nicely.

We are still busy working on new ideas and planning how best to push the young drivers offer!

The actual launch was towards the back end of last year but didn't make much impact really. So as the lighter nights are coming we intend to push it and use the added daylight to train any newcomers, which we hope will include young and older alike.

We have now some date's booked for our first outing of the year with our mobile display unit, which will be at Sainsburys in Scunthorpe. Our very grateful thanks to the manager of Sainsbury's for permitting us to use their premises. We are still looking for other venues to display our services with the MDU, so any ideas would be appreciated.

I know not everybody likes zoom meetings, but I have to say that the latest invite from Hull & East Riding group was absolutely brilliant. It was a fantastic speaker called Carol Glenn. Carol has achieved so much in her car racing career, you wouldn't believe it. She was not only an interesting speaker but such a lively character as well. She has done some remarkable things in the motor racing world and is certainly a name to look out for in that field. I had a slight glitch in my email system that sadly prevented three or four people getting on the zoom; to them I say I'm really sorry, but the issue has been rectified now and it is all working well on that front. If enough of you contact me and say she sounds really good and are really interested in seeing her on Zoom, then I will try and sort it for you!

For the moment we are continuing to have social meetings on Zoom as well as our committee meetings, but we will be reviewing it every month and updating you all with any changes.

For those who have responded to my requests in last months' issue, thank you very much, but please don't forget that we need you to communicate with us. Tell us how we are doing or what you think we should be doing. After all it's your group. Thank you all for your continued help and support.

Stay safe and keep up the good old IAM standards.

Terry Heath
Chairman & N O



Observer Team News – January 2022.

*H*ello everyone, Welcome to our team news page.

There is not an awful lot to tell for this edition, except that we are in the process of working out a new procedure for monitoring the progress of associates joining through the Safer Roads Humber scheme. This is well underway and will be discussed at a potential extraordinary Observer meeting in the near future.

We have several associates undergoing their observed runs, one of whom has their Advanced Driver Course Test booked for Saturday 5th February, you know who you are, GOOD LUCK!!!!!!

Some observers are still without an associate at present and are patiently hanging in there until more become available. If you know any-one who might be interested in improving their driving please spread the word; we have plenty of information packs to give out. Our two newest recruits to the team are doing well with their Local Observer training, so best wishes you both.

Very importantly, you are no doubt aware of the forthcoming new Highway Code rules coming into force at the end of January, so please take time to familiarise yourself with them, they might save your life, or someone else's. As usual, if you need any help or advice driving wise, let us know and we will do our best to help.

Finally, Our first Observer Team Meeting is planned for Tuesday February 1st at 7:30pm.

Anything of general interest will be in March news.

On behalf of the Observer Team, Best wishes and Safe Driving to all.

Paul Cassell.

Important Information for all our ADI's (as well as anyone else you may know, who is an ADI)

The following is intended to present a recently established trial project from the Department for Transport, designed to address the current lack of cycling learning resources for ADIs and learner drivers.

Interaction between cyclists and drivers is increasingly commonplace as the rates of active travel rise. Approved Driving Instructors (ADIs) play an invaluable role in helping the next generation of drivers to understand, communicate and cooperate with people who cycle. By equipping learner drivers with these skills, ADIs are helping to promote safe and seamless interactions between cyclists and drivers in what is becoming an increasingly shared road space.

Cycle Savvy Driving provides resources ADIs can use for their own professional development and whilst teaching learner drivers. Supported by the DVSA, the AA and ADI membership bodies, it presents a unique opportunity for 4000 ADIs nationwide to take part in ground-breaking research that will shape the future of the driving instructor industry and the safety of British roads.

Feedback collated from the ADIs participating in the pilot project will be used to assess the impact the course has on long-term attitudes and behaviours towards cyclists. Participants will receive a survey upon their registration, and a follow-up survey after completing the training, asking for feedback on professional practice and views about cycling. Participants recruited to the treatment group will receive an additional survey immediately after their course completion. Responses provided in the surveys will help us explore the differences in views, and how the training materials affect this.

ADIs who register are given access to bespoke, interactive content free of charge designed to ensure that cyclists' safety is at the forefront of their minds when they teach new drivers. On registration, ADIs are randomly assigned to one of two groups. The treatment group will have immediate access to the pilot resources now, including the 2-hour online training, and the 3.5 hour on-road practical training course. The control group will gain access to the online training as soon as the pilot ends.*

ADIs should register at www.cyclesavvydriving.co.uk to improve understanding and co-operation between people who drive and people who cycle, to harness the opportunity to shift their skills up a gear through CPD, and to be entered into a draw to win one of five £100 Amazon vouchers.

Benjamin Smith
Director of Development



The Bikeability Trust 07915115224 | www.bikeability.org.uk

Bikeability Trust is Registered as a charity in England and Wales charity no:117111

Registered office: The Bikeability Trust, Salisbury House, Station Road, Cambridge, CB1 2L

You can support the Bikeability Trust if you shop with www.smile.amazon.co.uk – everytime you shop Amazon donates to the Trust so we can fund cycle training for more children.

[Read our monthly newsletters](#) for more information about what we do, and what's going on in the industry

Sue Smith, Casualty Reduction Officer:

Office: Safer Roads Humber,
Compliance and Engagement Team
Central Ticket Office

The Hall

Beverley HU17 8HL,

East Yorkshire

t. 01482 398211 m. 07900052959 e. susansmith@humbersidefire.gov.uk



HUMBERSIDE
Fire & Rescue Service

IS IT LEGAL FOR CYCLISTS TO RIDE TWO ABREAST ON THE ROAD?



CYCLE SAVVY DRIVING

"EVERY ADI SHOULD EXPERIENCE A ROAD CYCLING COURSE LIKE THIS"

"A GREAT COURSE TO ADD KNOWLEDGE AND FIRST-HAND EXPERIENCE TO THE ADI'S TEACHING TOOLKIT."

"I LEARNED FAR MORE THAN I THOUGHT I WOULD AND HAD A FUN PACKED DAY!"

CYCLE SAVVY DRIVING

DID YOU KNOW THAT...

ALMOST TWO THIRDS OF CYCLISTS KILLED OR SERIOUSLY INJURED WERE INVOLVED IN COLLISIONS AT, OR NEAR, A ROAD JUNCTION?

CYCLE SAVVY DRIVING

ARE YOU AN APPROVED DRIVING INSTRUCTOR OR KNOW SOMEONE WHO IS?

CYCLE SAVVY DRIVING

DID YOU KNOW...

ALMOST 2/3 OF CYCLING INCIDENTS HAPPEN AT T-JUNCTIONS AND ROUNDABOUTS?



CYCLE SAVVY DRIVING

COMMUNICATION IS MORE THAN JUST A HAND SIGNAL.

SIGN UP FOR CYCLE SAVVY DRIVING!



CYCLE SAVVY DRIVING

See also page 23 for Recent Changes to the Highway Code

CALLING ALL DRIVING INSTRUCTORS:

Sign up for our exciting pilot project and shift your skills up a gear!

The Department for Transport is looking for 4,000 approved driving instructors to take part in a brand new study. Sign up now to take part in ground-breaking research, designed to improve understanding and co-operation between people who drive and people who cycle. Participants will be assigned to a control or treatment group, with both groups given access to free online training at different points in the study, and free practical training available to some. This training is the perfect opportunity to shape the future of the driving instructor industry, whilst gaining valuable training to ensure you stand out from competitors. This project is delivered by the Bikeability Trust, supported by the AA, DVSA, DIA, MSA GB and ADI NJC.

Sign up today at: [Cycle Savvy Driving - Practical cycle training and online learning resources](#)



The Bikeability Trust

Article very kindly supplied by Sue Smith via Mick Harris

COMMITTEE MEMBERS

CHAIRMAN

Terry Heath

Tel: 01652 655601

Email – terryheath@sky.com or

chairman@scunthorpegrimsbyadvancedmotorists.org

VICE-CHAIRMAN

Paul Johnson

Tel: 01724 721156

TREASURER

Malcolm Gothard

01724 764237

SECRETARY

Dawn Kitching

Tel: 01724 875276

GDPR

Mick Harris

Tel: 01469 531625

MDU/EVENTS/GROUP CONTACT

Paul Johnson

Tel: 01724 721156

CHIEF OBSERVER

Allen Hardman

Tel: 01472 813231

LOCAL OBSERVER ASSESSOR GRIMSBY

Ian Greenbeck

Tel: 01472 825867

MAGAZINE EDITOR/PUBLISHER

Jan Burditt

Tel: 07834170678 **email:**

publicity@scunthorpegrimsbyadvancedmotorists.org

Non - Committee Members

OBSERVER TRAINER

Paul Cassell

07763 195 912

cassell.10@btinternet.com

LOCAL OBSERVER ASSESSOR

SCUNTHORPE/ASSOCIATE

COORDINATOR

John Wigmore

Tel: 07751608127



The views and opinions expressed in this newsletter are those of the individual writers and not necessarily of IAM RoadSmart, nor the Scunthorpe and Grimsby group.

The current composition of our group is made up as follows:

Full Members - 70

Associate Members - 12

Total Members - 82

Please have a look at our new web page which includes lots of useful information

including our Monthly Quiz

<https://www.iamroadsmart.com/groups/scunthorpeandgrimsby>

The
Area Service Delivery Manager
for our region
(East Midlands and North Yorkshire)
is

Peter Serhatlic.

Peter can be contacted on:
peter.serhatlic@iam.org.uk
or via mobile on 07703 718

Group Website <https://www.iamroadsmart.com/groups/scunthorpeandgrimsby>



SAGAM can be found on Facebook at: [@SGAMG1](https://www.facebook.com/SGAMG1)



You can Follow us on Twitter: [@ANDGRIMSBY](https://twitter.com/ANDGRIMSBY)

Super swift gates which automatically close off lanes to be trialled on National Highways



An automatic taper which can close off lanes in minutes and saves road workers having to put out cones in the face of oncoming traffic is to be trialled on the National Highways network.

The innovation, SwiftGate, can be fully deployed in around five minutes compared to the 25 minutes it takes road workers to put out the taper of cones directing often fast-moving traffic away from a live lane.

SwiftGate is being installed at the A3 Hindhead Tunnel in Surrey which requires regular closures for essential maintenance work. To enable maintenance to be carried out safely, workers cone off the entrances on the north and southbound carriageways.

During 2019 there were 14 vehicle incursions into these roadworks putting the lives of workers at risk. Now National Highways has teamed up with Kier and Highway Care to trial the automated taper gates which will be installed on the north and southbound carriageways of the tunnel. The gates clearly and safely filter traffic out of the traffic lane. Cones can then be put out beyond the taper to clearly mark out the closed-off lane. As well as avoiding the need for workers to manually set out tapers, the arms are a strong visual deterrent which will help avoid incursions, particularly at night-time.

Head of Lean and Continuous Improvement, Martin Bolt, who has been overseeing the innovation for National Highways, said:

“Installing and removing a taper of cones in the face of traffic exposes our road workers to risk, particularly on elevated sections of road, bridges or tunnels where there may not be an embankment or place of safety. If successful, SwiftGate is another step to zero live lane working for our workforce as we work towards our goal of ensuring nobody is harmed while working or travelling on our roads. The automated tapers free up workers to do other jobs and can be put out in just 50 seconds meaning work can begin straight away with less disruption for road users. We look forward to seeing SwiftGate in action at Hindhead Tunnel.”

Kier Highways Senior Project Manager, Mark Sheppard, said:

“The SwiftGate project will give us a great opportunity to trial something that is completely new to the National Highways network, that will modernise the standard approach to road worker protection. Traffic management installation can be a high-risk activity, so the opportunity to introduce an automatic solution that has the potential to remove the need to put our workforce in the ‘firing-line’, is a worthy project.”



Highway Care Business Development Director, Ben Duncker, said:

“We are very pleased, after many months of hard work from the project team, that we are able to commence the trial of this exciting, safety innovation working collaboratively with Kier and National Highways. We are confident that the system will be a success in not only improving the safety of our traffic management operatives but also improving customer journeys through the faster and more efficient closing and reopening of lanes. Safety through innovation is our priority and the ability to trial such new solutions with National Highways is a testament to their commitment to making the roads safer for all users.”



SwiftGate follows the successful trials of an automated cone laying machine by National Highways, Highway Care and Kier. The Falcon ACLM vehicle puts out and retrieves cones, avoiding the need for a two-man team to lift and drop cones from the back of a moving vehicle.

A second automated cone laying machine being developed by King Highway Products through the National Highways' innovation fund is due to undergo further off-road testing shortly.

National Highways has a ring-fenced pot, the Innovation and Modernisation Fund, which is helping to maximise

the opportunities offered by technologies such as automated vehicles. It is part of National Highways' Digital Roads 2025 vision which will fundamentally change how our roads are designed, built, operated and used. The strategy sets out how the growth of digital technology and the move to electric, connected and autonomous vehicles will create the roads of the future. To visit the Digital Roads website click [here](#)

Article very kindly supplied by Bryan Woods, via Terry Heath



Did You Know? – Haumea, is an Egg Shaped Dwarf Planet?

Originally designated 2003 EL61 (and nicknamed Santa by one discovery team), Haumea is located in the [Kuiper Belt](#), a donut-shaped region of icy bodies beyond the orbit of Neptune. The other known dwarf planets in the Kuiper Belt are Pluto, Eris, and Makemake ([dwarf planet Ceres](#) is located in the main asteroid belt between Mars and Jupiter).

Haumea is roughly the same size as Pluto. It is one of the fastest rotating large objects in our solar system. The fast spin distorts Haumea's shape, making this dwarf planet look like a football.

Two teams claim credit for discovering Haumea citing evidence from observations made in 2003 and 2004. The [International Astronomical Union's Gazetteer of Planetary Nomenclature](#) lists the discovery location as

Sierra Nevada Observatory in Spain on Mar. 7, 2003, but no official discoverer is listed.

Everything we know about Haumea is from observations with ground-based telescopes from around the world.



Other key dates:

2005: Haumea's moons are discovered.

2008: Haumea is recognized as a dwarf planet by the International Astronomical Union and named Haumea.

Namesake

Haumea is named after the Hawaiian goddess of fertility.

Potential for Life

Haumea is extremely cold and doesn't appear to have conditions suitable for life.

Size and Distance

With a radius of about 385 miles (620 kilometers), Haumea is about 1/14 the radius of Earth. If Earth were the size of a nickel, Haumea would be about as big as a sesame seed.

From an average distance of 4,010,000,000 miles (6,452,000,000 kilometers), Haumea is 43 astronomical units away from the Sun. One astronomical unit (abbreviated as AU), is the distance from the Sun to Earth. From this distance, it takes sunlight 6 hours to travel from the Sun to Haumea.

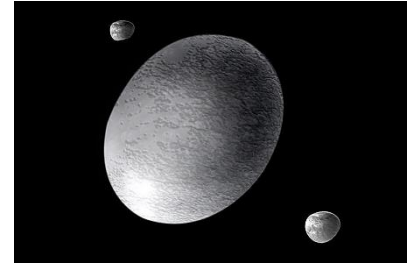
Orbit and Rotation

Haumea takes 285 Earth years to make one trip around the Sun. As Haumea orbits the Sun, it completes one rotation every 4 hours, making it one of the fastest rotating large objects in our solar system.

It is possible that a large object impacted Haumea billions of years ago and set off Haumea's spin and created its moons.

Moons

Haumea has two known moons: Namaka is the inner moon, and Hi'iaka is the outer moon. Both are named for the mythological daughters of Haumea. Hi'iaka is the patron goddess of the island of Hawaii and of hula dancers. Namaka is a water spirit in Hawaiian mythology.

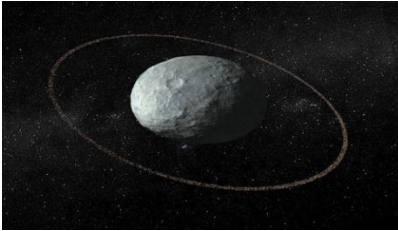


Formation

Dwarf planet Haumea is a member of a group of objects that orbit in a disc-like zone beyond the orbit of Neptune called the Kuiper Belt. This distant realm is populated with thousands of miniature icy worlds which formed early in the history of our solar system about 4.5 billion years ago. These icy, rocky bodies are called Kuiper Belt objects, transneptunian objects, or plutoids.

Rings

Haumea is the first known Kuiper Belt Object to have rings. Scientists [announced the discovery](#) in 2017 after watching the dwarf planet pass in front of a star.



Structure

Astronomers believe Haumea is made of rock with a coating of ice.

Surface

We know very little about Haumea's surface.

Atmosphere

We know very little about Haumea's atmosphere.

Magnetosphere

Scientists do not think Haumea has a magnetosphere.

Article researched by Jan Burditt with extract taken from; <https://solarsystem.nasa.gov/planets/dwarfplanets/haumea/in-depth>



Dates for your diary...

If you have any articles, photographs or anything you feel may be of interest for the **March** edition, please feel free to email me at publicity@scunthorpegrimsbyadvancedmotorists.org no later than **15th March please.**

The following are dates for our 2022 Social Meetings: (if restricted, meetings will be via Zoom)
27th April (**AGM**) 22nd June, 24th August, 26th October.

Committee meeting dates for 2022 are: 9th February; 9th March; 13th April; 11th May; 8th June; 13th July; 10th August; 14th September; 12th October; 9th November; 14th December.

PLEASE NOTE: Meetings are to be held via Zoom until further notice.



D M COMMERCIALS

Here at D M Commercials we are a family run business that can cater to all your motoring needs.

- cars • vans • Light Commercials
- Heavy Commercials • Trailer

We have a fully equipped workshop where we can carry out a wide range of services

- Routine servicing
- Engine rebuilds
- Clutch replacements
- M.O.T Prep
- Chassis welding

24hr recovery and call out service available
Cottage Beck Road, Scunthorpe, North Lincolnshire
DN16 1TR
TEL: 07850543645

Who Was St Valentine?

Did you know that the tradition of sending unsigned Valentine greetings dates back more than seventeen centuries, to the year 269AD?



Valentine was Bishop of Terni near Rome, before being elevated to the rank of “Saint”. As an early Christian leader, he was persecuted under the reign of the pagan Emperor Claudius II, and lead a strong underground church in the area. All went well for him, until the advent of war brought a change in the law.

The Emperor took the view that single men made better soldiers. According to Claudius, married men would be distracted by thoughts of home life, and that marriage would also “sap their strength”. This lead to the Emperor making a decree that outlawed marriage throughout the Roman Empire, thus ensuring a continuous pool of men available for military service. Valentine by contrast, continued to hold the Christian view of monogamous marriage, combined with his belief that a stable home life engendered a sense of purpose, together with strength of character.

Claudius however believed that marriage was simply an early form of “Draft Dodging”, and so after Valentine had conducted numerous clandestine marriage services, he was arrested in the year 269AD and sentenced to death by beheading. During his short residence on death row, he befriended the jailer’s daughter. Although he was seldom allowed to speak to her, he was able to send her short notes which he duly signed “from your Valentine”.

Through the process of time, the Valentine’s Card became as covert as the marriages he conducted, and young single girls waited eagerly for a card from a secret admirer, or Valentine. This situation continued until the “free love” era of the 1960’s brought a total change in the meaning of Valentine.

With the onset of commercialism and the printed “Valentine Card”, it soon became routine for young single people to exchange unsigned Valentine cards. This practice continued until a further liberalisation of attitudes lead to the modern interpretation of Valentine’s as a time to buy erotic gifts for one’s sweetheart.

So we see how the meaning of Valentine changed over the centuries, to the extent that it now bears no resemblance to the original view of stable monogamous marriage.



Article very kindly supplied by John Wigmore



On the 20th January 2021, it was announced that the remains of the largest Sea Dragon had been discovered at Rutland Water. Read on to discover more.....

Every drop of water has a history and with more of us using the region's water every day, it's vital we all 2and only use what we really need. Our reservoirs and water parks are key to how we supply our region with clean drinking water and form part of the 4000 hectares of parkland, woodland and nature reserves we're proud to look after. Last year we found something huge at our reservoir at Rutland Water.

Introducing the Rutland Sea Dragon



Britain's largest sea dragon found in the smallest county

After an initial discovery by our partners at Leicester and Rutland Wildlife Trust, we brought in specialist paleontologists² to help uncover the fossilised remains of an Ichthyosaur (also known as a Sea Dragon) at Rutland Water with the support of Rutland County Council.

What we first thought was a piece of broken pipe stuck in the clay, turned out to be a 180-million-year-old Ichthyosaur. In the past 200 years of excavation, this Ichthyosaur is the biggest and most complete find of this species in Britain.

You can learn more about the Rutland Sea Dragon, the team behind the dig and watch exclusive behind the scenes videos [here](#). And you can see more about this historic discovery in 'Digging for Britain' on BBC Two – Tuesday 11th January, 8pm or on BBC iPlayer.

[Learn more](#)

Taken from Anglian Waters FB site

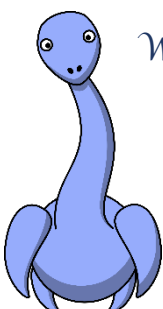


Laughter has got to be the Best Medicine!.....

*What do you call a dinosaur with an extensive vocabulary?.....****A thesaurus*****

*What do you call a British dinosaur?.....****A tea rex*****

*What do you call a blind dinosaur?.....****A doyouthinkhesaurus*****



SUPPORT YOUR FAMILY & FRIENDS TO BECOME AN ADVANCED DRIVER

To receive your application form please send your name and contact details along with your payment to:

Mr M Gothard
7, West Green
Messingham
North Lincs
DN17 3QT

Cheques should be made payable to:
The Institute of Advanced Motorists
For more information contact: Terry Heath on:
01652 655601 or visit our website

www.scunthorpegrimsbyadvancedmotorists.org

Take advantage of our current offer at the reduced price of £119.00



A little bit of what you fancy! – Cookies & Cream Fridge Cake

Make this no-cook cookies & cream fridge cake with the help of your fridge – a must for the inexperienced cook and *especially* for Valentine's Day.....

Preparation – 20 mins - Serves 12 – 14

Ingredients

- flavourless oil (such as vegetable), for the tin
- 600ml double cream
- 200ml mascarpone or soft cheese
- 1 tsp vanilla extract
- 3 tbsp icing sugar
- 4 x 154g packets chocolate cream-filled sandwich cookies, plus extra to serve
- 200g dark chocolate, broken into small pieces



Method

STEP 1 Oil a 20cm loose-bottomed or springform cake tin and line with baking parchment, ensuring the inside of the tin is fully covered. Whisk the cream, mascarpone, vanilla and icing sugar together in a large bowl until smooth and holding soft peaks.

STEP 2 Line the base of the tin with a single layer of the cookies, (don't worry if there are small gaps, as these will be filled with the cream mixture). Spoon over a third of the cream mixture and smooth with a spatula, spreading it to the edge. Repeat twice with the rest of the cookies and the cream mixture. *Cover and chill for at least 24 hrs, or up to two days.*

STEP 3 Melt the chocolate in 20-second bursts in the microwave, or in a heatproof bowl set over a pan of simmering water, ensuring the base of the bowl doesn't touch the water. Leave to cool for 10 mins. Unwrap the cake, remove it from the tin and peel off the parchment. Drizzle over the melted chocolate, letting it drip down the sides, and crumble over the extra cookies. Serve, or chill for up to 1 hr.



*Happy
Valentine's Day!*

SCRUMMY *yummy* SANDWICH SHOP

278, Pelham Road, Immingham, North East Lincolnshire



We are a small family run business, serving the whole of Immingham and surrounding areas including the Docks, Offices and Households. All our food is home cooked and freshly prepared daily, making for a very busy environment!

Our delicious, Scrummy Yummy Steak Pie is well known throughout the area and beyond and our Sunday dinners are so yummy and so in demand! Our staff and products were featured on Estuary TV and latterly noted by Compass FM in 2018 as one of the best.

Why not come and try us for yourself?

Call 01469 577172 or have a look at our website at

www.scrummyyummy.net



Mmmmmmm....Have you been Scrummy'd yet?

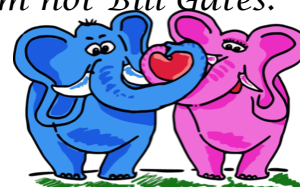
Show us photo identification along with your current IAM membership card and we'll give you 10% off your order!



I am sometimes white but I am not snow, I am sometimes dark but I am not the night, I am sweet but I am not sugar, I am rich but I am not Bill Gates.

What am I?

Last month's answer - A Blackboard



Advertising in our Newsletter

If you or anyone you know would like to advertise in our newsletters, please contact Jan on 07834 170 678 or email: publicity@scunthorpegrimsbyadvancedmotorists.org

The cost of advertising is:

Full page - £40.00: Half page - £20.00

Costs are per annum and there are 12 monthly issues

AGM – 27TH APRIL 2022



Top Valentine's Day Car Features for a Romantic Evening

Valentine's Day is approaching, and it's important to make sure that your car is equipped to deal with the most romantic day of the year. Here are a few features that will ensure your car plays an important part in your Valentine's plans with someone special.

Locking Centre Console



Nothing says romance like a locking centre console. How could that be? Because there's no better way to hide the engagement ring than a lockable centre console that won't be pried open by your soon-to-be fiancé — or worse, by thieves. Stick the engagement ring in the console, lock it up and don't worry about it before pulling it out when the time is right to pop the question. While locking centre consoles aren't often available from the factory, they're common as aftermarket accessories, especially in SUVs, pickups and other vehicles with large centre consoles. Some are easy to install yourself, meaning your date might not even notice if you add the feature.

Mood Lighting

Most cars don't offer mood lighting, but drive one of the vehicles that includes the feature and you'll agree there's no going back. We think your date will agree too, as you can change lighting colours from a romantic red to a cool blue with the push of a button. The Kia Soul's ambient light system is called the Mood Lighting system. On select trims, the Mood Lighting System uses a 3D pattern surface on the upper door panels to provide lighting from the centre door panels. The Mood Lighting System works with music, and you can customize it to complement the beat of whatever song you're playing. The light surrounding the front speakers and cup holders will pulse and change colours in sync with the music. The Mood Lighting System gives you an exciting audio-visual experience. It's almost like having a disco ball right in your cabin! The Kia Soul is big on individuality, and the Mood Lighting System allows you to select different modes based on your current mood. Whether you want fast-paced colour changes or calm ambient lighting, the Soul has you covered.



Bluetooth Audio

A well-chosen song can go a long way toward setting the right mood, and there's no easier way to make sure that the perfect song is playing exactly when you want than with Bluetooth Audio. Sync your phone or music player to your car and you can hear exactly what you want, when you want, without major hassle. Or choose a playlist of romantic songs thanks to music apps like Pandora and Spotify. Bluetooth Audio is offered with many modern infotainment systems, from [Chevrolet MyLink](#) and [Ford SYNC](#) to [Kia UVO](#) and Toyota Entune (see below). And if you don't have Bluetooth Audio, fear not: You can still use your phone or music device in the car for apps like Pandora and Spotify, provided that you have an auxiliary input.

Heated Seats

In most climates, this most romantic of holidays is accompanied by decidedly unromantic weather: cold temperatures, snow or freezing rain. To stay warm, you'll want to make sure that your car has heated seats for the driver and passenger, and heated rear seats are always a plus if you're celebrating the holiday with a double date. No, heated seats can't quite match up to cuddling in front of a fire, but they'll keep you warm until you can get there.



Massaging Seats

There aren't many cars that offer massaging seats, but it might make your date a little bit better if you happen to have them. Available on high-end luxury cars such as the Mercedes S-Class and Jaguar XJL, massaging seats do exactly what they say: Provide a massage as you drive down the road. It's an excellent benefit for drivers and passengers alike, as massaging seats usually offer several settings and cover hard-to-reach places.

Convertible Top

If you're lucky enough to live in a part of the country where Valentine's Day isn't accompanied by cold weather and snow, there's no better feature than a convertible top. Put it down and enjoy the night sky from the comfort of your car while your favourite songs play in the background. Oh, and a little advice for the guys: If your date has long hair, consider stocking up on hair ties before the big night.



Toyota Entune

Most infotainment systems offer music streaming, apps, weather information and traffic reports, but Toyota's Entune system takes things a step further by giving drivers the ability to book movie tickets and make restaurant reservations during the drive. It's an excellent feature that will allow you to plan the perfect date on the fly. The Entune™ 3.0 App Suite is now standard in all of Toyota's 2019 models like this Toyota Prius+ (left) and is an integrated multimedia navigation and telematics system for Toyota automobiles, providing satellite-based information on traffic, weather, sports scores, stocks, and fuel prices via subscription through SiriusXM. When connected to a compatible cellular phone running the Entune app, via radio or USB cable, the system provides a browser and other apps, including those from music services such as iHeartRadio, Pandora and XM Satellite Radio. The cell phone app has iOS, Android, and Blackberry versions; to use this feature, a cell phone data plan is required. The system can be controlled with voice recognition, and may include the "Safety Connect" personalization system.



So if you're lucky enough to have one of these or indeed a car with the heated seats, mood lighting or Bluetooth Audio make sure you treat your sweetheart on Valentine's Day!



Pets Corner – Make sure you never give your dog these foods!



From avocado skin to macadamia nuts, here are 10 foods you should avoid giving your dog as they can cause serious health problems. It's well-known to many dog owners that chocolate can cause serious problems for dogs. However, there are a number of common foods you're likely to have in your home that can cause serious problems for your pet. There may be other household foods and items that you should not give to your dog, so please consult your veterinarian prior to giving your dog anything in addition to their regular food.

Artificial sweetener

Xylitol is an artificial sweetener found in chewing gum, sugar-free peanut butter, toothpaste, and other products, and is derived from hardwood trees. Excessive consumption of xylitol can cause bloating, flatulence, and diarrhoea in humans—but for dogs, xylitol is toxic. It's important to keep products containing xylitol away from where your dog can eat them, even accidentally.

Alcohol

Unlike in humans, dogs' kidneys can't process alcohol effectively, which can cause them medical problems. Fresh, clean water is always best for your dog.

Avocados

It's not the flesh of an avocado, but the pit, skin, and leaves that can cause harm to your dog. These contain a substance called persin, which causes vomiting and diarrhoea.

Caffeine

While caffeine is not toxic to dogs, it does have the same effect on them as humans—and because they are more sensitive to these effects, it can be very unpleasant and uncomfortable for them. If your dog consumes even a small amount of caffeine, it may become hyperactive or start to have tremors.

Chocolate

It's well-documented that chocolate is highly toxic to dogs. This is because it contains theobromine, a stimulant that interrupts your dog's metabolic processes. Dark chocolate and baking chocolate is particularly high in theobromine, making it even more dangerous for dogs. Depending on the amount they have consumed, a dog might suffer from an upset stomach, heart problems, seizures, or even death.

Fried and fatty foods

Just as fried and fatty foods can be bad for people, they can also be bad for dogs. High-fat foods can cause your dog to have stomach upsets and can also contribute to pancreatitis in some dogs. Plus, regular consumption of these types of food can lead to obesity and related health problems.

Garlic and onions

Many people regularly cook with onion and garlic, but for dogs these staple ingredients are toxic. Whether the garlic and onions are cooked or raw, if dogs eat these they can damage their red blood cells, which can then result in anemia.

Grapes and raisins

These fruits are healthy enough for humans but are toxic for dogs. If [dogs eat grapes](#), it can have a dramatic effect on a dog's health, and can lead to acute and sudden kidney failure.

Nuts

While they may seem healthy, avoid giving your dog any nuts to eat. Their size makes them a choking hazard, and they are high in fat, which can trigger an upset stomach in your pet. In particular, macadamia nuts have been shown to be highly poisonous to dogs. Although they tend not to result in fatalities, they can cause your dog to suffer from an inability to walk, vomiting, lethargy, and tremors.

Milk, cream, and cheese

As dogs grow into adulthood, their ability to digest dairy products decreases as they lack the enzymes to do so. This means they can exhibit signs of lactose intolerance if they eat milk, cream, or cheese, such as vomiting, diarrhoea, and an upset stomach.

If you think your dog may have eaten something he/she shouldn't have done, it's crucial to get advice from your veterinarian immediately. You should also keep these toxic foods out of reach of your dog to ensure they only eat what's best for them.....they will thank you in the end.....



Smart Motorway Rollout Paused as Government Responds to Transport Committee Report

On Wednesday 12 January, the Government announced it will pause the conversion of dynamic hard shoulder smart motorways to all-lane running (ALR) following a Transport Select Committee inquiry into their safety. The Government said that it will now move to collect five years of safety and economic data for every all-lane running scheme introduced before 2020 following the Committee stating the current evidence base is insufficient. More emergency areas will also be retrofitted across existing ALR schemes.

The safety improvements set out in the Government's 2020 action plan will be independently evaluated by the Office for Rail and Road (ORR), with an annual report published on progress. ORR will also be asked to conduct an independent evaluation of the effectiveness and operation of stopped vehicle detection technology, including maintenance and monitoring. The Government said it will also consider if the ORR should report on wider work by National Highways to improve safety on the Strategic Road Network.

Given the pause in the rollout of smart motorways, the Government will look at alternative options for enhancing capacity on the Strategic Road Network as it prepares for the next Road Investment Strategy. Logistics UK has called for an evidence-based approach to be taken to the use of smart motorways and welcomes the Government's acceptance of these recommendations, we continue to support measures to ensure smart motorways are as safe as possible.

The full government response can be viewed [here](#) and the press release can be viewed [here](#).

Innovative concrete repairs trialled on the M180

An innovative way of repairing concrete roads is being trialled on a section of the M180 in North Lincolnshire. The hard shoulder, lane one and lane 2 of the eastbound carriageway between junctions 1 (Tudworth) and 3 (Midmoor), near Scunthorpe, has experienced issues with water getting through carriageway joints and under the concrete. As vehicles drive along the road, the concrete pushes the water back up through the joints causing the surface to deteriorate. Now, a tough, durable resin is being injected into it to stabilise the concrete and extend its life in a first for National Highways' strategic road network. Under the £5.2m scheme, the top layer of the road has been planed off to expose around 30,000 square metres of concrete. Some 20,000 holes are being drilled into the concrete which are filled with short, narrow tubes called packers. Resin is then injected into the packers through the concrete, which forces out any water held underneath, the resin then hardens and stabilises the concrete base before the carriageway is resurfaced. The work is expected to reduce the frequency of roadworks along this busy section, which is used by around 16,000 vehicles a day. Esref Ulas, National Highways Project Manager, said:

"The M180 was built around 40 years ago and has served our customers well but recently we've had to carry out a number of unplanned roadworks on this section due to water damage, which we know has been frustrating for people. At National Highways we are constantly striving to improve journeys by using innovative solutions to prolong the life of our assets. This new approach to stabilising the concrete should make those unplanned roadworks a thing of the past. The resin is designed for longevity and should extend the life of the road's surface by another 10 years or more."

The resin injection work, which started last autumn, is being carried out by Metrail Construction Ltd. It's a method used by Metrail's cross-pollination of skills based on infrastructure assets commonly associated with the rail industry to stabilise tunnels, including on the London Underground, but this is the first time it's been used on England's strategic road network. Martyn Sherwood, Managing Director of Metrail said:

"We are particularly pleased to be working closely with National Highways to introduce this innovative technique to the maintenance of the UK's strategic road network. The unique formula of the resin used and its rapid hardening capability, which allows carriageways to be opened much more quickly, is cost effective and a gamechanger for concrete road maintenance in the UK. We are looking forward to continuing to support National Highways in meeting its maintenance objectives going forward."

Once the concrete stabilisation is complete a second phase of the project to repair and seal the joints between the concrete slabs will be carried out. The whole programme of work is due to end in February.

To keep up to date with the latest road improvements in the region:

<https://highwaysengland.co.uk/our-work/yorkshire-and-north-east/>

Above articles both supplied by Bryan Woods via Terry Heath

Dates in February 202

Events, celebrations, awareness events, saint's days, annual campaigns - UK and Globally.

National Storytelling Week

29th Jan to 5th Feb 2022

A week for the promotion of the oral tradition of storytelling, the very first way of communicating life experiences and the creative imagination.

[Website](#)

Chinese New Year

1st Feb 2022

The New Year according to the Chinese Calendar. 2022 welcomes the Year of the Tiger. Chinese New Year is celebrated all around the world.

[How To Celebrate Chinese New Year](#)

[Do You Know Your Chinese Star Sign? Find It Now!](#)

[The Personality of People Born in the Year of the Tiger](#)

Harry Potter Book Night

3rd Feb 2022

Harry Potter Book Night is a chance for fans young and old to celebrate J.K. Rowling's wonderful series - and it's a chance to pass the magic on to new readers who haven't yet discovered these unforgettable books.

[Website](#)

[Harry Potter Printables](#)

Winter Olympics 2022

4th Feb to 20th Feb 2022

The world's biggest winter sporting event, held every four years. This time it will be held in Beijing, China.

[Website](#)

World Nutella Day

5th Feb 2022

A day dedicated to enjoyment of this most popular of chocolate and hazlenut spreads.

[Website](#)

[10 Yummy Recipes Using Nutella](#)

Charles Dickens Day

7th Feb 2022

Celebrating one of Britain's greatest writers on his birthday.

Safer Internet Day

8th Feb 2022

A day to help raise awareness of online safety issues in your home, school, workplace or community, not just on Safer Internet Day but all year round.

[More About Safer Internet Day](#)

[Website](#)

Darwin Day

12th Feb 2022

A celebration of scientist Charles Darwin, author of The Origin of Species.

[What is Darwin Day All About?](#)

St. Valentine's Day

14th Feb 2022

The annual celebration of love is the day when we take the opportunity to tell the people we love just how much they mean to us.

[Valentine's Day Facts, Puzzles and Colouring Pages](#)



Random Acts of Kindness Day

17th Feb 2022

Spend the day doing random acts of kindness. The holiday was started by the Random Acts of Kindness Foundation, which was founded in 1995.

[Website](#)

February Half Term Holiday

21st Feb to 25th Feb 2022

Check with your school for individual date variations of this school holiday.

– [Things To Do In February Half Term](#)

Fairtrade Fortnight

27th Feb to 13th Mar 2022

Fairtrade farmers, workers and campaigners up and down the country highlight the difference fair trade can make to lives and communities.

[Website](#)

International Polar Bear Day

27th Feb 2022

Every year, this global event draws attention to the challenges polar bears face in a warming Arctic and how each of us can help.

[Website](#)

Pokemon Day

27th Feb 2022

Pokemon Day is an annual celebration of the original Japanese release of Pokemon Red and Green. Various events are held around the world to mark this occasion.

[Website](#)



Police in London recorded more than 250 e-scooter crashes in first six months of 2021

There are more question marks about the safety of e-scooters with new figures showing that the Metropolitan Police logged 258 crashes involving private vehicles in the first six months of last year.

ITV news reports that the Metropolitan Police data was obtained by Labour's London Assembly policing and crime spokesman Unmesh Desai, who said the widespread use of illegal e-scooters is putting Londoners "at risk of significant harm".

Desai told ITV:

"The use of illegal e-scooters on our roads and pavements is putting Londoners at risk of significant harm, especially the most vulnerable in our communities such as people with limited mobility, visual impairments and hearing loss. Legally, private e-scooters can only be used private land but that law is regularly flouted, and the Police in London seized more than 3,500 private e-scooters between January and November last year. Whilst it is concerning that these figures are likely to be just the tip of the iceberg, it has been encouraging to see the scale of enforcement action taken by TfL and the Met Police so far,"

Article very kindly supplied by Bryan Woods, via Terry Heath

Info for members.....



Red Letter days

20% off Red Letter Days experiences



Try something different in 2022 when you book a Red Letter Days experience, which you can enjoy for 20% off. Whether you're looking for a unique day out with the kids or want a relaxing weekend away, you'll find something to suit – there's also a fantastic range of driving experiences including off-roading and track racing.

[READ MORE >](#)

RAC

Breakdown cover from just £6 a month*

RAC fixes 4 out of 5 at the roadside, so we'll get you back on the road without any worry. *New personal based roadside cover on a monthly contract.

[READ MORE >](#)



Save at National Tyres and Autocare

National Tyres and Autocare is helping you to keep your car in prime driving condition this winter with 17.5% off tyres and Autocare and 50% off MOTs at selected branches. You'll find over 240 branches nationwide, so there's sure to be one on hand for all your maintenance needs.

[READ MORE >](#)

Up to 65% discount on Aguri electronics



Aguri is offering great discounts on its range of electronic gadgets including dashcams, speed trap detectors, sat navs and jet washers.

[READ MORE >](#)

[Find more benefits](#)

Sneaky Highway Code Rule with a Hefty Fine

If you're a driver, you'll most likely know there are some strange rules that can land you with hefty fines and points on your licence.

But even those who think they know the [Highway Code](#) like the back of their hand are likely to miss this one strange rule when parking.

You might know exactly how to park, but have you ever worried about which direction you're parked in? Well, it looks like you should, as there's a sneaky rule which could land you with a hefty fine, What Car reports.

During the day, you can park in either direction.

But come night-time, drivers are banned from parking their cars against the direction of traffic, unless there is a parking space already in place.

Rule 248 of the Highway Code states that at night, "a car must not be parked at the side of the road facing against the direction of traffic unless in a recognised parking space".

This is because parking against the direction of traffic means its reflectors won't be caught by an approaching vehicle, which can be dangerous.

If a car is parked in the same direction as traffic, it will be illuminated by the rear reflectors.

The offence can carry a fine of up to £1000, and if you've got an eight-seater on your hands, this goes up to around £2500. This isn't the only strange rule that can lose you money.

Article very kindly supplied by Bryan Woods via Terry Heath



Have a go at this February Valentine's Day Word Search – how many did you get?



February Word Search



L	C	S	W	E	I	W	U	F	E	O	B	W	D	I
Q	Y	E	P	J	C	H	O	C	O	L	A	T	E	P
M	Q	I	U	A	U	E	I	D	A	S	E	B	R	Z
I	W	R	C	F	P	L	N	C	H	I	M	E	F	C
L	W	R	Z	J	I	I	K	I	E	W	S	M	K	P
J	D	U	X	C	D	H	N	C	T	I	K	I	C	W
V	D	L	E	I	I	G	U	K	D	N	V	N	H	U
I	P	F	S	S	T	R	A	E	H	T	E	E	W	S
E	H	W	T	O	Q	V	N	K	E	E	F	L	S	C
Y	X	O	N	E	T	T	I	M	S	R	M	I	A	Q
W	R	N	R	R	S	R	F	M	T	A	K	N	E	V
Y	Y	S	F	F	K	Z	Q	R	Z	N	D	C	M	B
H	M	H	V	U	Z	E	I	C	T	Y	L	O	V	E
W	J	S	W	V	T	A	S	D	O	Q	D	L	O	Q
T	Y	Y	J	C	O	H	I	V	C	R	E	N	W	J

BE MINE
CHOCOLATE
KISS
PINK
SMITTEN
VALENTINE

BLACK HISTORY
CUPID
LINCOLN
PRESIDENTS
SNOWFLURRIES
WASHINGTON

CANDY
HEARTS
LOVE
RED
SWEETHEARTS
WINTER





You can email, tweet or post a letter to the following addresses; Terry Heath, 48, Vicarage Ave, Wrawby, Brigg, North Lincs. DN20 8RY Email: terryheath@sky.com Twitter: @ANDGRIMSBY



20% Discount on Advanced Driver & Rider courses with: Lincoln IAM, Lincolnshire Advanced Motorcyclists & Scunthorpe & Grimsby Advanced Motorists.



Now rider and driver groups are permitted to resume, as a current member of any of the above groups, you will receive a 20% discount when you sign up to an Advanced Driver or Rider Course in Lincolnshire. **HOW TO CLAIM** - Contact us on the details below, quoting the group name of your choice and we'll sign you up - A.D. Course, Lincoln IAM: Tel:0300 365 0152 or lincolniam@gmx.com A.R. Course, Lincolnshire Advanced Motorcyclists: Tel: 01427 616864 or lincs-am-sec@pobroadband.co.uk A.D. Course, Scunthorpe & Grimsby Advanced Motorists Tel: 01652 655601 or terryheath@sky.com



Police Respond To Reports Of 'Upside Down Tortoise Causing Traffic Issues' (It Wasn't A Tortoise)



Police in Atherstone & Coleshill (Warwickshire Police) thought they were being sent on an animal rescue mission yesterday morning after motorists called in to report that an 'upside down tortoise' was causing traffic issues on Marsh Lane, Warton Orton.

However, when officers arrived on the scene, the 'upside down tortoise' turned out to be part of a vehicle's exhaust system instead of a tortoise that could not right itself.

'Control:

"We have had a report of an obstruction in the road can you attend Marsh Lane, Warton Orton please as there is an upside down tortoise causing traffic issues".

Social media users were quick to share messages highlighting the funny side of the bizarre call.

One said:

'That was a turtle disaster.. hope you told control to wind their necks in before they requested the Shellocopter.'

Taken from the Facebook page of



Drivers across the Country have been Warned of a Hefty Fine following Changes to the Highway Code.



50 new rules in the Highway Code came into place just a few days ago, on January 29th and the changes mean drivers risk a £200 fixed penalty notice and six points on their licence.

One of the largest changes, which could land you this penalty, is the tightening of mobile phone laws – it is already illegal to text or call using a hand-held phone while driving, but that doesn't seem to be stopping the terrible driving habit many of us have. Under the latest changes to the Highway Code, the law will also ban drivers from scrolling through

playlists, playing games or taking photos and videos. Although drivers can still be able to use a “hands-free” device when driving, however, they must be driving responsibly – this includes a sat-nav.

This change followed new research which estimated 1.79 million motorists use their mobile phone while on the motorway, reports the Express. Cameras which monitor mobile phone use while driving have been installed on a trial basis on motorways already.

One camera alone caught a terrifying 15,000 drivers using their mobile phones while at the wheel – and don't think driving faster means the camera won't get a clear image of you, the latest technology has the ability to capture clear images at up to 185mph, in any weather conditions.

The trial estimated that one in 200 drivers use their phone while driving on the motorway.

By using Artificial Intelligence (AI) it means photographs will be taken of all drivers so the rule-breakers can be automatically detected.

Past research from Go Compare found that harsher penalties had shown a reduction in convictions.

Ryan Fulthorpe, car insurance expert at Go Compare, said:

“It is clear that more needs to be done to enforce safety measures to keep the roads as safe as possible. We hope that the ability to effectively penalise those breaking the rules will act as a powerful deterrent to dangerous driving.

Hopefully, we will continue to see the number of offences fall and safer roads as a result.”

Old rules meant mobile phone laws could only be enforced by police witnessing the offences while driving alongside offending drivers – this meant observations could sometimes prove difficult especially with HGV's.

Another considerable factor is car insurance rates will go up by an average of 56 percent if you have four or more points on your license.

Original source article: https://www.examinerlive.co.uk/news/uk-world-news/uk-drivers-warned-face-200-22748748?fbclid=IwAR2IgeAc5p1K_J5KZPve5P94uqFB_DXW1GPO9DwECuca6RV_PYfpogdzO8

However, there are other very important changes, which include the introduction section of The Highway Code which has been updated to include 3 new rules about the new ‘hierarchy of road users’.

1 The hierarchy places those road users most at risk in the event of a collision at the top of the hierarchy.

It does not remove the need for everyone to behave responsibly.

It's important that all road users: are aware of The Highway Code: are considerate to other road users: understand their responsibility for the safety of others

The 3 new rules are numbered H1, H2, and H3. [Rule 1](#) [Rule 2](#) [Rule 3](#)

2 There are also new rules about people crossing at junctions:

The updated code clarifies that: when people are crossing or waiting to cross at a junction, other traffic should give way: if people have started crossing and traffic wants to turn into the road, the people crossing have priority and the traffic should give way: people driving, riding a motorcycle or



cycling must give way to people on a zebra crossing and people walking and cycling on a parallel crossing.

A parallel crossing is similar to a zebra crossing, but includes a cycle route alongside the black and white stripes

[Rule 2 \(Introduction\)](#) [Rule 8 \(for pedestrians\)](#) [Rule 19 \(for pedestrians\)](#)

[Rule 170 \(using the road\)](#) [Rule 195 \(using the road\)](#) [Rule 206 road users requiring extra care\)](#)

3 Walking, cycling or riding in shared spaces:

There is new guidance in the code about routes and spaces which are shared by people walking, cycling and riding horses. People cycling, riding a horse or driving a horse-drawn vehicle should respect the safety of people walking in these spaces, but people walking should also take care not to obstruct or endanger them.

People cycling are asked to: not pass people walking, riding a horse or driving a horse-drawn vehicle closely or at high speed, particularly from behind: slow down when necessary and let people walking know they are there (for example, by ringing their bell): remember that people walking may be deaf, blind or partially sighted not pass a horse on the horse's left.

[Rule H1 \(Introduction\)](#) [Rule 13 \(for pedestrians\)](#) [Rule 62 \(for cyclists\)](#) [Rule 63 \(for cyclists\)](#)

4 Positioning in the road when cycling

There is updated guidance for people cycling about positioning themselves which includes: riding in the centre of their lane on quiet roads, in slower-moving traffic and at the approach to junctions or road narrowing's: keeping at least 0.5 metres (just over 1.5 feet) away from the kerb edge (and further where it is safer) when riding on busy roads with vehicles moving faster than them

People cycling in groups

The updated code explains that people cycling in groups: should be considerate of the needs of other road users when riding in groups: can ride 2 abreast - and it can be safer to do so, particularly in larger groups or when accompanying children or less experienced riders:

People cycling are asked to be aware of people driving behind them and allow them to overtake (for example, by moving into single file or stopping) when it's safe to do so.

People cycling passing parked vehicles: The updated code explains that people cycling should: take care when passing parked vehicles, leaving enough room (a door's width or 1 metre) to avoid being hit if a car door is opened: watch out for people walking into their path.

[Rule 67 \(for cyclists\)](#) [Rule 213 \(road users requiring extra care\)](#)

5 Overtaking when driving or cycling

You may cross a double-white line if necessary (provided the road is clear) to overtake someone cycling or riding a horse if they are travelling at 10 mph or less (Rule 129). There is updated guidance on safe passing distances and speeds for people driving or riding a motorcycle when overtaking vulnerable road users, including: leaving at least 1.5 metres (5 feet) when overtaking people cycling at speeds of up to 30mph, and giving them more space when overtaking at higher speeds: passing people riding horses or driving horse-drawn vehicles at speeds under 10 mph and allowing at least 2 metres (6.5 feet) of space: allowing at least 2 metres (6.5 feet) of space and keeping to a low speed when passing people walking in the road (for example, where there's no pavement): Wait behind them and do not overtake if it's unsafe or not possible to meet these clearances.

People cycling passing slower-moving or stationary traffic

The updated code confirms that people cycling may pass slower-moving or stationary traffic on their right or left. They should proceed with caution as people driving may not be able to see them. This is particularly important: on the approach to junctions: when deciding whether it is safe to pass lorries or other large vehicles.

[Rule 67 \(for cyclists\)](#) [Rule 76 \(for cyclists\)](#) [Rule 163 \(using the road\)](#)

[Rule 212 \(road uses requiring extra care\)](#) [Rule 215 \(road users requiring extra care\)](#)

6 People cycling at junctions

The code has been updated to clarify that when turning into or out of a side road, people cycling should give way to people walking who are crossing or waiting to cross. There is new advice about new special cycle facilities at some junctions. Some junctions now include small cycle traffic lights at

eye-level height, which may allow cyclists to move separately from or before other traffic. People cycling are encouraged to use these facilities where they make their journey safer and easier.

There is also new guidance for people cycling at junctions with no separate facilities.

The code recommends that people cycling should proceed as if they were driving a vehicle where there are no separate cyclist facilities. This includes positioning themselves in the centre of their chosen lane, where they feel able to do this safely. This is to: make them as visible as possible: avoid being overtaken where this would be dangerous

People cycling turning right

The code now includes advice for people cycling using junctions where signs and markings tell them to turn right in 2 stages. These are:

stage 1 - when the traffic lights turn green, go straight ahead to the location marked by a cycle symbol and turn arrow on the road, and then stop and wait

stage 2 - when the traffic lights on the far side of the junction (now facing the people cycling) turn green, complete the manoeuvre

People cycling have priority when going straight ahead at junctions

The code clarifies that when people cycling are going straight ahead at a junction, they have priority over traffic waiting to turn into or out of a side road, unless road signs or markings indicate otherwise. People cycling are asked to watch out for people driving intending to turn across their path, as people driving ahead may not be able to see them.

[Rule H2 \(introduction\)](#) [Rule H3 \(introduction\)](#) [Rule 73 \(for cyclists\)](#) [Rule 74 \(for cyclists\)](#)
[Rule 75 \(for cyclists\)](#) [Rule 76 \(for cyclists\)](#) [Rule 167 \(using the road\)](#) [Rule 170 \(using the road\)](#)
[Rule 211 \(road users requiring extra care\)](#)

7 People cycling, riding a horse and driving horse-drawn vehicles on roundabouts

The code has been updated to clarify that people driving or riding a motorcycle should give priority to people cycling on roundabouts. The new guidance will say people driving and or riding a motorcycle should: not attempt to overtake people cycling within that person's lane

The code already explained that people cycling, riding a horse and driving a horse-drawn vehicle may stay in the left-hand lane of a roundabout when they intend to continue across or around the roundabout. Guidance has been added to explain that people driving should take extra care when entering a roundabout to make sure they do not cut across people cycling, riding a horse or driving a horse-drawn vehicle who are continuing around the roundabout in the left-hand lane.

[Rule 79 \(for cyclists\)](#) [Rule 167 \(using the road\)](#) [Rule 186 \(using the road\)](#)

8 Parking, Charging and Leaving Vehicles

The code recommends a new technique when leaving vehicles. It's sometimes called the 'Dutch Reach'. Where people driving or passengers in a vehicle are able to do so, they should open the door using their hand on the opposite side to the door they are opening. For example, using their left hand to open a door on their right-hand side. This will make them turn their head to look over their shoulder behind them. They're then less likely to cause injury to: people cycling or riding a motorcycle: passing on the road: people on the pavement

Using an electric vehicle charge point

For the first time, the code includes guidance about using electric vehicle charging points.

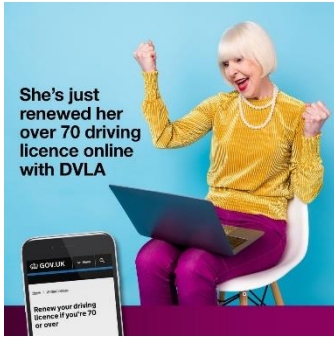
When using one, people should: park close to the charge point and avoid creating a trip hazard for people walking from trailing cables: display a warning sign if you can: return charging cables and connectors neatly to minimise the danger to other people and avoid creating an obstacle for other road users.

[Rule 239 \(waiting and parking\)](#)

In total, 10 sections of The Highway Code have been updated, with 50 rules being added or updated.

Stay up to date: If you do not follow the other rules in the code, it can be used in evidence in court proceedings to establish liability. The full updated version of [The Highway Code](#) is available, free of charge, on GOV.UK. You can [pre-order an updated version of The Highway Code book](#) online now, and buy a copy at most high street bookshops from April 2022. It has a new cover design so it's easy to recognise.

[CLICK HERE TO FIND OUT MORE](#)



[How to renew your driving licence online if you're 70 or over](#)

If you're 70 or over and need to renew your driving licence, the easiest and quickest way is online. Rachel Thomas, Service Designer, shows you how.

[Read More Here](#)



An Important Message from Terry Heath....

*Hi folks, now were back in the saddle and doing some guidance again, it's time to update you with a few things that have been changed. **John Wigmore** is now our SPOC (Single Point of Contact) for most things related to driving. So below are comprehensive details of how we are altering things.*

John is the SPOC. Please contact him for the following:

As an observer: *If you want a candidate to train or you have a candidate that you think might be about ready for test.*

As a check tester: *Please pass the check test result to John and when a candidate is ready for the main test, he is the one who puts them forward to the IAM.*

For observer training and such related issues, it's still Paul Cassell

For any other driving advice, contact Ch. Observer Allen Hardman.



And finally.....don't forget to look us up on the links below:



Group Website

<https://www.iamroadsmart.com/groups/scunthorpeandgrimsby>



SAGAM can be found on Facebook at: [@SGAMG1](#)



You can Follow us on Twitter: [@ANDGRIMSBY](#)

DON'T FORGET OUR AGM ON THE 27TH APRIL 2022